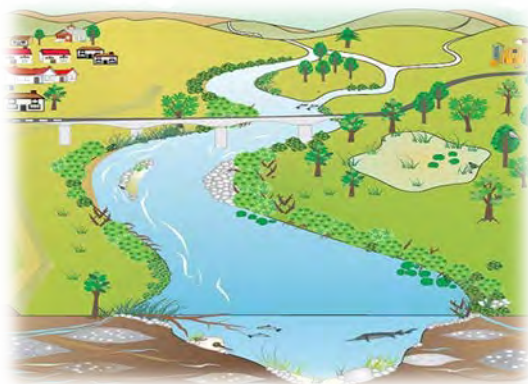




RESEARCH PROGRAM ON Water, Land and Ecosystems



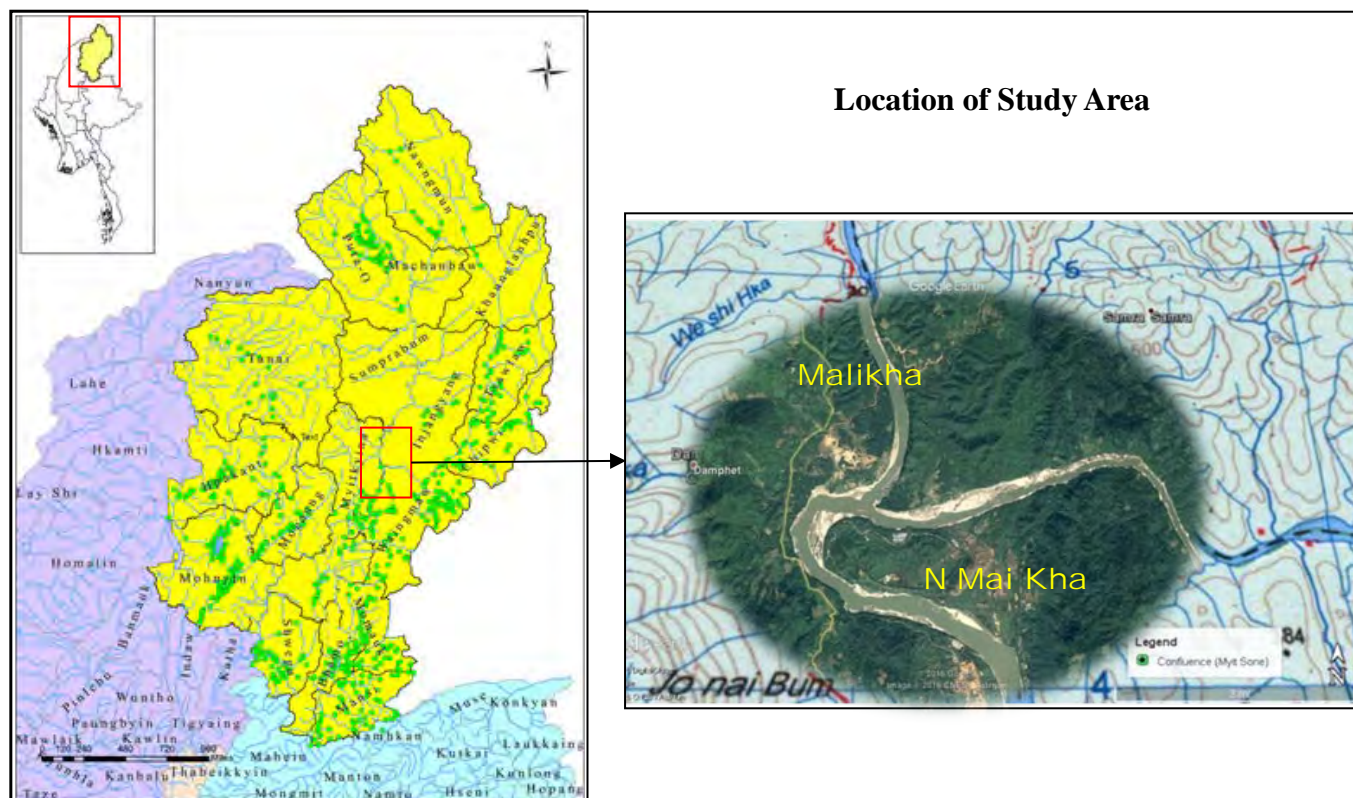
Greater MEKONG



Pollution Monitoring and Engaging Community Participation for Healthy River A case study in Upstream Ayeyarwaddy River (Malizup, Convergence of Maykha & Malikha River)



Miss Khin Seint Seint Aye
B.pharm (University of Pharmacy, Yangon)
MSc. Environmental Engineering Management.
(Asian Institute of Technology, Thailand)



Theme: Remote sensing and citizen observatories

NOW?

Mercury Concentrations range : 0.0003 to 0.00087mg/l
WHO Limit : 0.001 mg/l

Mining Activities

Birthplace of Ayeyarwaddy



N Mai Kha

Mining Activities

Water Quality Sampling Points
(26.6.2017)

Preliminary Sampling Points (4.3.2017 &
5.3.2017)



Problem Analysis

Situation or Problem

Potential Risk of Water Quality Pollution

Causes of situation or problem

**Point Source/
Non-point source
Pollution**

**Lack of
Water Quality
Station**

**Limited
Scientific Study on
current water quality profile**

**Limited Information
on
Potential threats**

**Anthropogenic Activities/
Land Use Activities
(mining, agriculture etc.)**

**Municipal /
Industrial Point Source**

Difficult access

**Conflicts
&
Security Concerns**

**Lack of Community based
water quality monitoring**

3

What positive impacts would result from the solution

More Knowledge on Current Water Quality and pollution source/

Mitigate Potential Risk of Water Quality Degradation

Healthy River/ Ecosystem

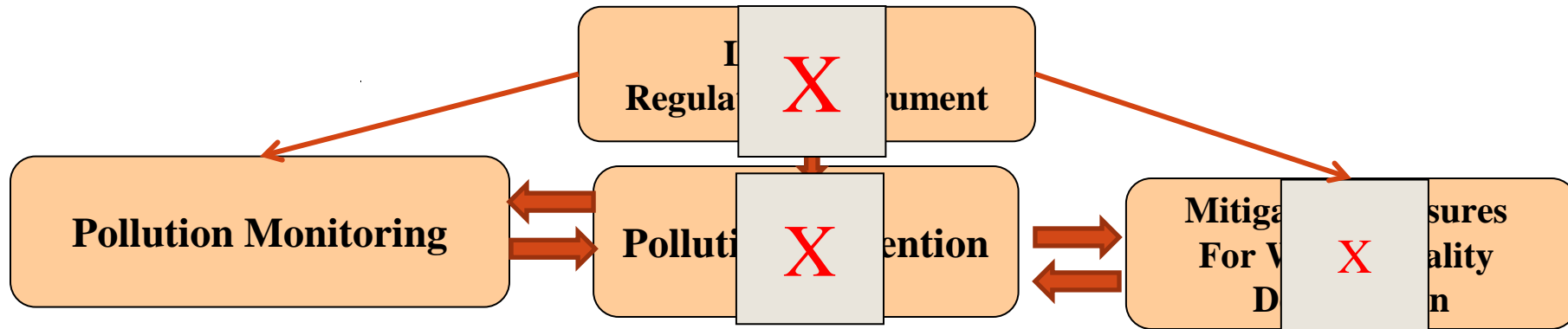
Reduce Fear on potential Negative Impact Of bad water quality

Community Safety (Downstream)

Solution

Tackling potential risk of Water Quality Pollution

What is needed to reduce/ fix the causes of the problems or situation?



(What will I do to fix the causes



MONITOR YOUR RIVER!



Pollution Monitoring

Pollution Monitoring

Identify Potential Pollution Sources

Expert Level monitoring

Community based water quality monitoring

Wa

X

y

Long Term Sustainable Goal

Reduce Risk to Health of River System and promote citizen participation

**Filling information gap of upstream water quality profile/
Foundation for further contribution to water quality monitoring network**

**What will be
the change ?**

**Output 1.
Detailed Understanding of
the System**

**Activity 1.1
Water Quality
Monitoring Plan**

**Activity 1.2
Extensive Environmental
Monitoring Campaign**

**Output 2.
More Information on
Potential Threats and pollution
source**

**Activity 2
GIS & RS/Land use
maps**

**Activity 2.1
Preliminary Field Survey**

**Output 3.
Community based
monitoring Program
to track pollution**

**Activity 3
Training on monitoring
techniques and sampling/
Checklist/ Providing
Monitoring Test kits**

**Activity 3.1
Establish monitoring sites and
community monitoring**



THANKS FOR YOUR ATTENTION !